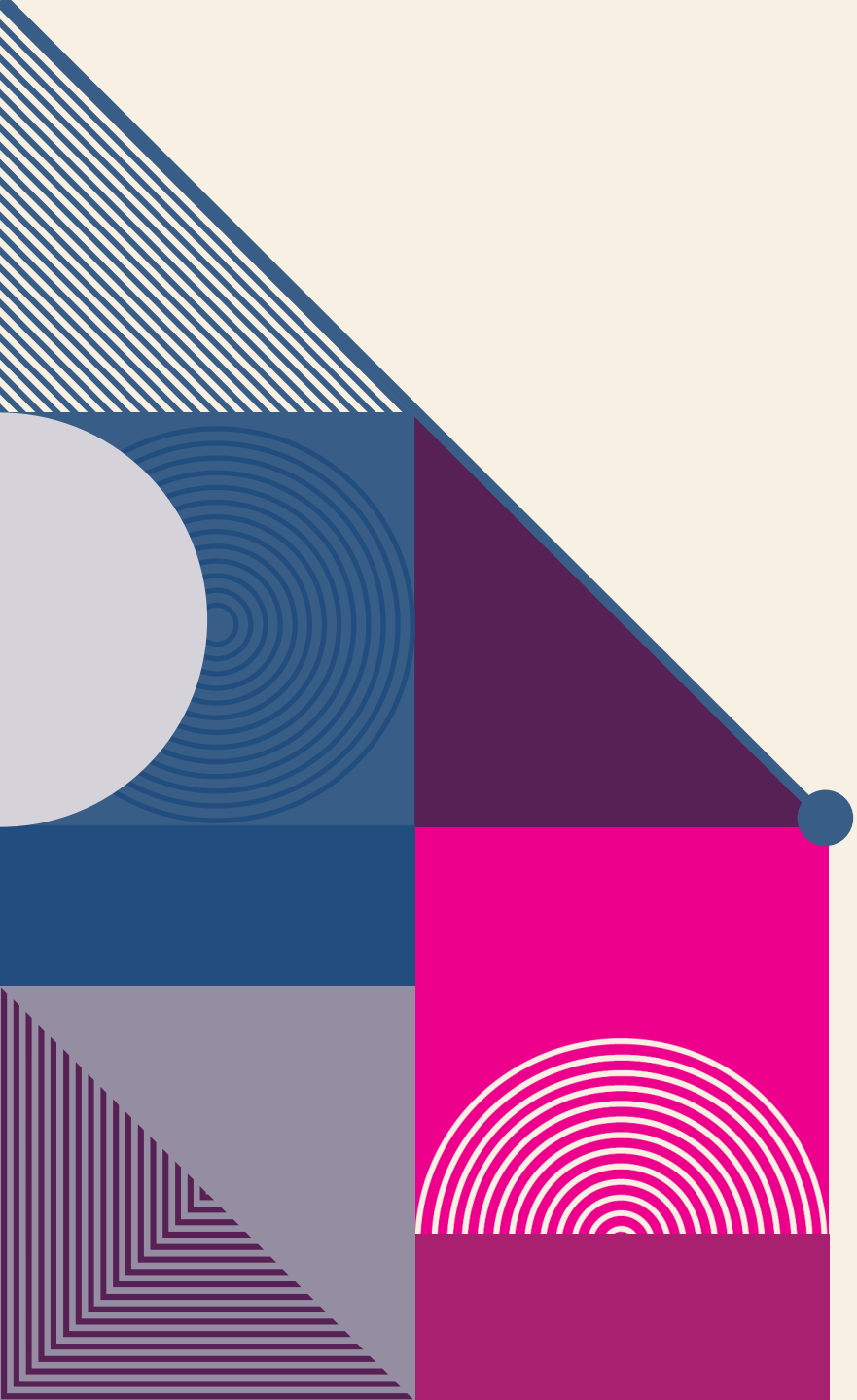


An abstract geometric design on the left side of the page. It features a dark blue background with various shapes and patterns: a white circle at the top left, a grey semi-circle, a magenta triangle with diagonal lines, a magenta square with a white grid pattern, and a grey triangle. The design is composed of several overlapping geometric elements in shades of blue, magenta, and grey.

MISSOURI TROUT PARKS

CARL HAMMOND-BEYER





AGENDA

Introduction - MO Trout Program

Locations

Geology Rules

Fishing Options

Costs

Home waters



MO DOC (MDC) TROUT WATERS

Blue Ribbon Waters (1 fish over 18")

White Ribbon Waters

Winter Stockings

Trout Parks

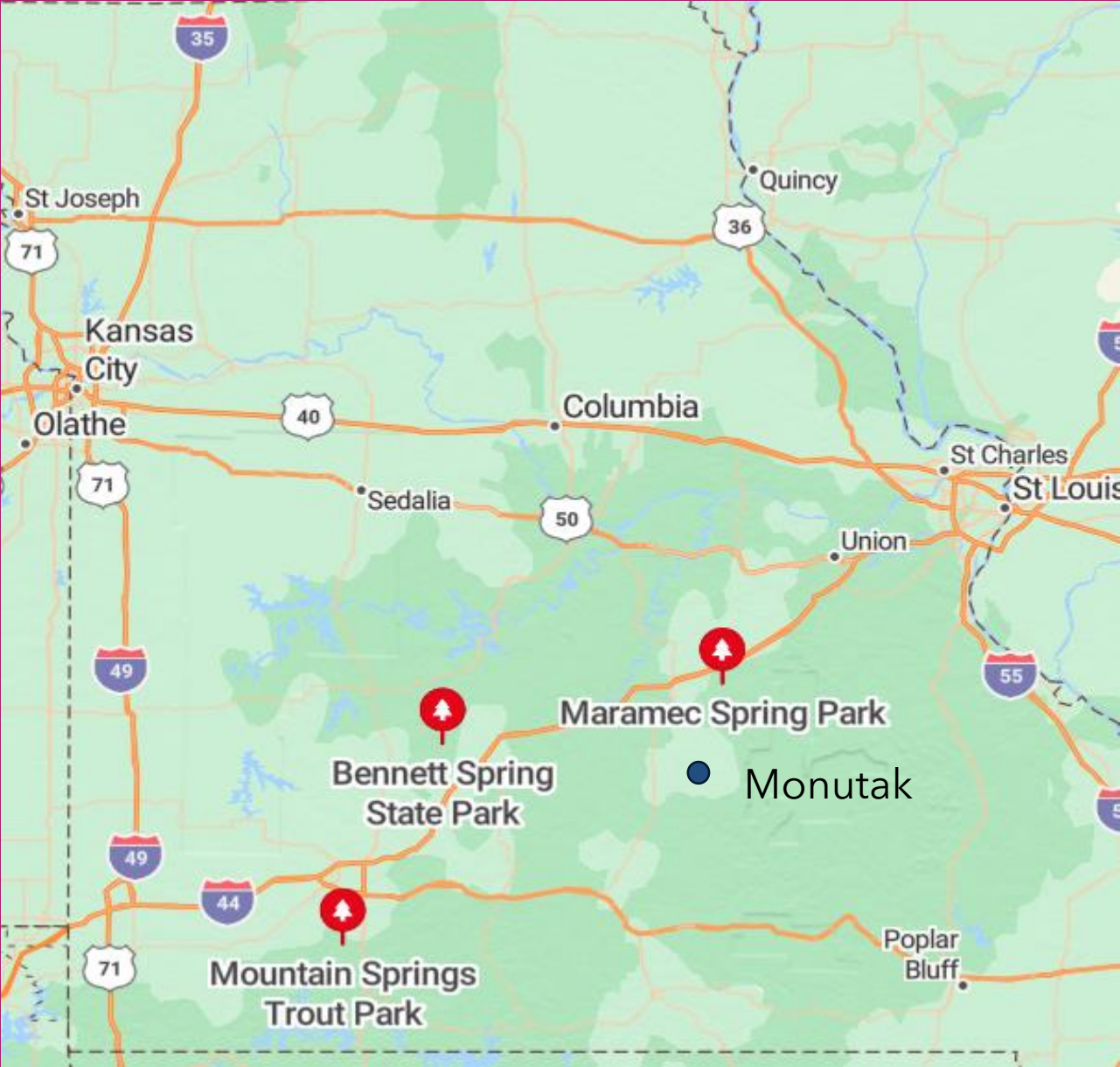


FOUR TROUT PARKS

MARAMEC SPRING PARK,
BENNETT SPRING,
MONTAUK, AND
ROARING RIVER (MOUNTAIN SPRINGS)

DAILY TROUT TAG: \$5 FOR ADULTS + LICENSE.
LIMITS: THE DAILY LIMIT IS 4 TROUT
SEASON: MARCH 1 – OCTOBER 31
OPEN SEASON BELOW THE PARKS
NO POROUS SOLED WADERS

MISSOURI TROUT PARKS



S

GREAT PLACE TO TEACH SOMEONE TO FISH







It can be a zoo, lots of people in Missouri are outdoors people.


SOLITUDE IS POSSIBLE



THERE ARE DESIGNATED ARTIFICIAL AND FLYFISHING ONLY SECTIONS

MONTAUK SPRINGS

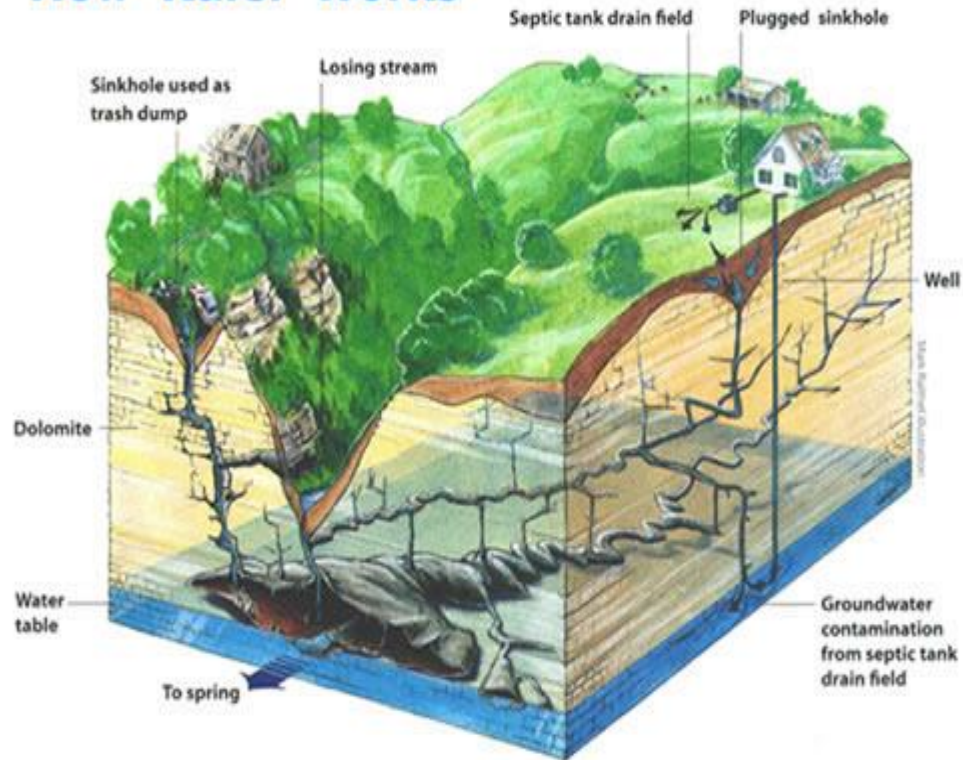




**WHAT MAKES
THIS AREA SO
UNIQUE?**

KARST TOPOGRAPHY AND LIMESTONE/DOLOMITE

How Karst Works



Karst is a type of landscape characterized by the presence of springs, sinkholes, losing streams and caves, created as groundwater dissolves soluble rock such as limestone or dolomite. (CaCO_3 and Ca:MgCO_3)

Sinking Creek

THE WATER LITERALLY SPRINGS FROM THE GROUND (MERAMEC SPRINGS 100 M GALLONS/DAY, 50° F YEAR ROUND)

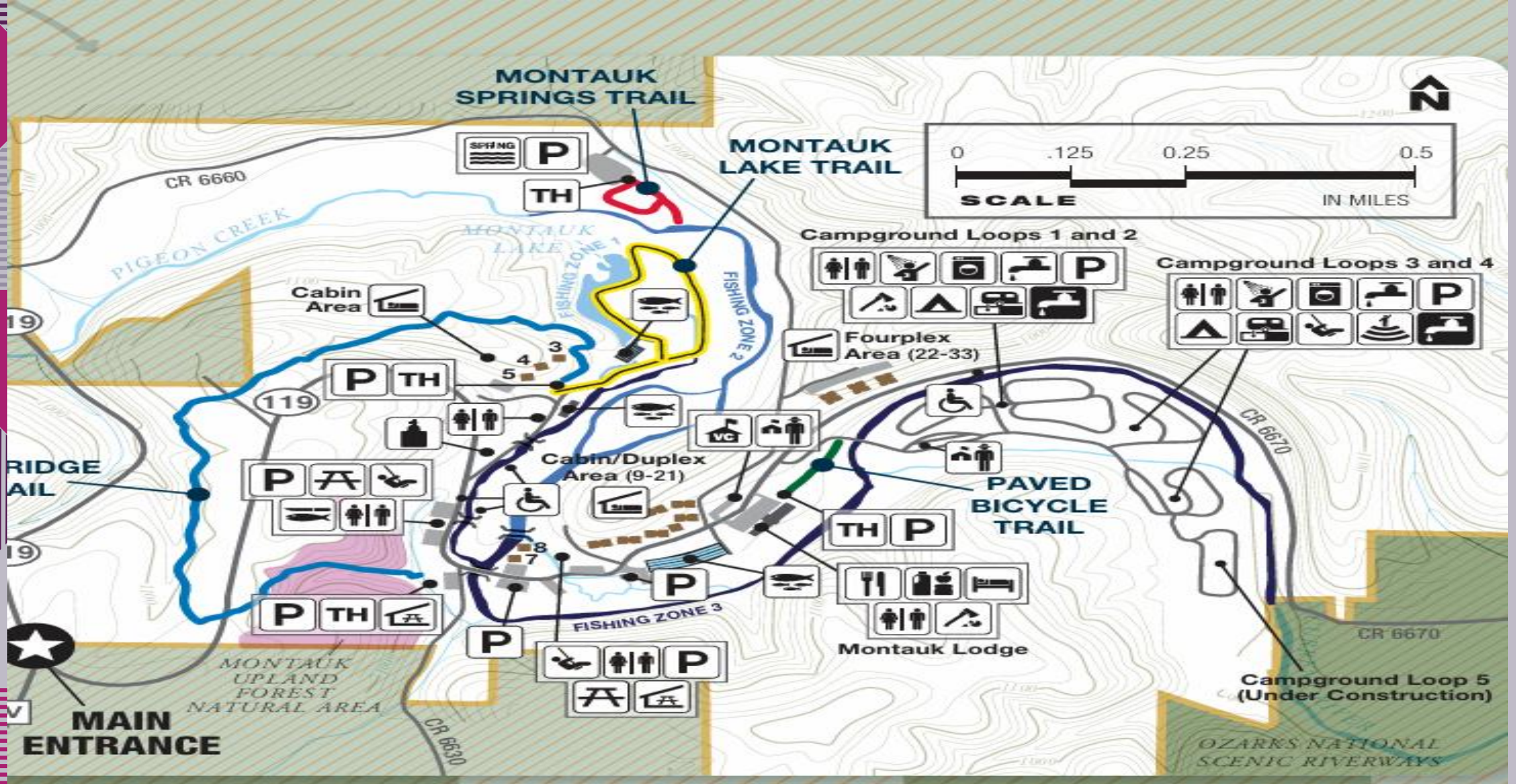




ROARING FORK SPRING (45M G/DAY)



MONTAUK FACILITIES



LODGE AND CABINS





ACCOMODATIONS

- Montauk and Bennett Springs have cabins, a lodge, store and a campground.
- Meramec Springs only has a campground and a store.



FISHING OUTSIDE THE PARK

- Both Trout and Smallmouth are abundant in the streams around the parks.
- Meramac – The Meramec river above the park has smallmouth, below the park trout and smallmouth.
- Montauk – The Current river below the park is a blue ribbon trout stream. Can be floated for days.
- Canoe and kayak rentals are available.

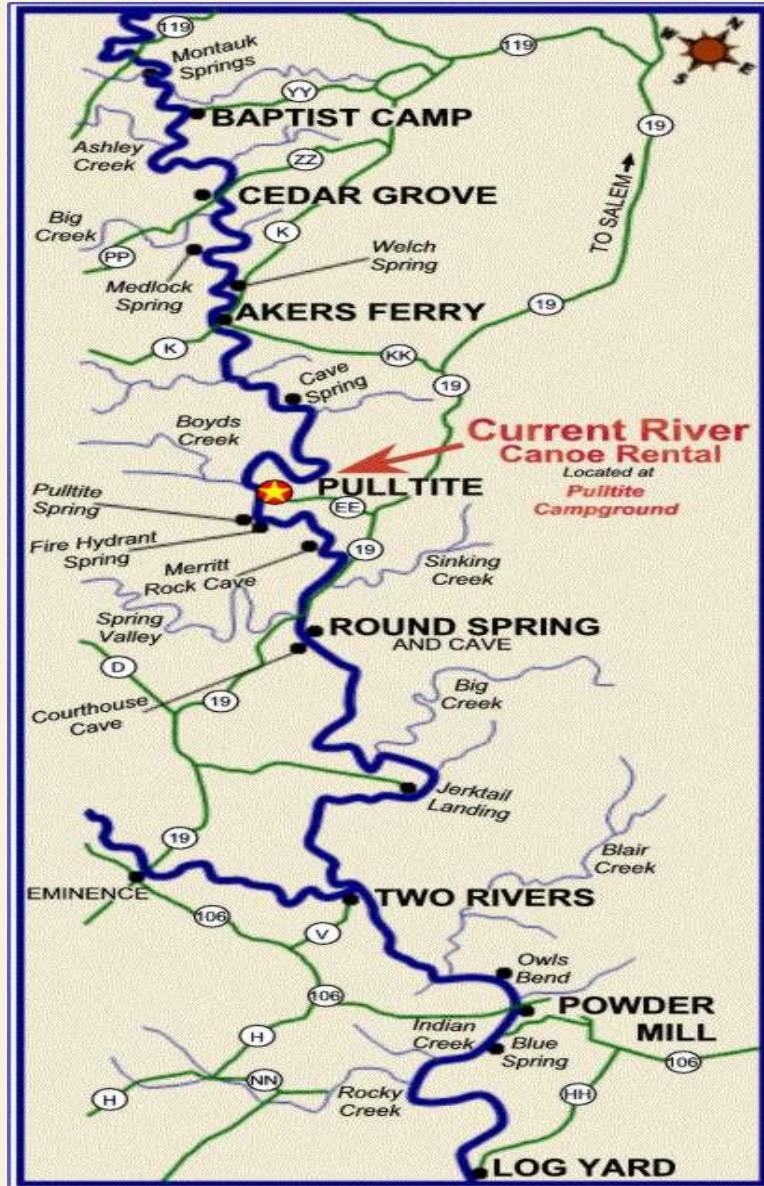
FLOAT FISHING BELOW THE PARKS CAN BE AMAZING



LOTS OF INTERESTING PLACES TO EXPLORE



FLOAT TRIPS ON THE CURRENT



COST ESTIMATES

Activity	Cost	Add ons
Travel	Flight Cola-St. Louis = \$250-\$450	Drive = 13-15 hours
Fishing License (MO)	Annual = \$53.50	Trout Tag = \$12
Daily Tag in park	\$5.00	
Cabin Rental	\$200-\$300/night for 4 \$50-90/night	Motel - 150/night (2/ Campground \$25-35/night

BEST TIMES TO GO:

**MAY AND SEPTEMBER/OCTOBER
AVOID THE SUMMER WHEN SCHOOLS ARE
OUT.**

**IF YOU ARE INTERESTED IN PLANNING A
TRIP, SEE ME AND WE CAN ARRANGE IT.**

HOME WATERS ...LOWER SALUDA

- Saluda TU to assist in stocking on January 22.
- As a group we need to know these waters well and monitor them. Mike has done an excellent job tracking the water quality in past years.
- In upcoming meetings I will bring in macroinvertebrate samples from different sections of the river for us to pick and record the bugs. The goal is to make us better fishermen or fisherwomen.

WHAT IS IN THE WATER AT SALUDA SHOALS?

At your table is a tub with a sample from Saluda Shoals. What macroinvertebrates are in there?

What are the fish feeding on?

Examine the contents, put any bugs in the small shot glasses.

What did you find?

Take a picture of it with your phone.



WHAT DOES THIS TELL US ABOUT THE WATER QUALITY?

-Little diversity - Why?

DO, Flow regime, nutrients...

Next meeting we will look at samples from further downstream.



THANK YOU

Carl Hammond-Beyer

803 215-4943

chbtrout@gmail.com